



SLUŽBA
ZA POSLOVE
SA STRANCIMA
SERVICE FOR
FOREIGNERS'
AFFAIRS



MIGRANT PRESENCE OUTSIDE TEMPORARY RECEPTION CENTRES IN BOSNIA AND HERZEGOVINA



12 April 2023

ROUND 20



38 municipalities
in
**4 cantons in FBiH and
6 regions in RS**



**155
locations
covered**



**257 migrants
estimated
outside TRCs**

This report surveys the migrant² population currently not accommodated in any official Temporary Reception Centre (TRC) in Bosnia and Herzegovina (BiH) to provide insight into their profiles, needs and intentions. This is done by interviewing migrants and key informants in locations where migrants are known to gather outside TRCs. Thirteen teams of 57 total data collectors from IOM, the Service for Foreigners' Affairs (SFA)¹ and the Red Cross Society of BiH (RCSBH) collected the data on 12 April 2023 in 155 unique locations across the country.

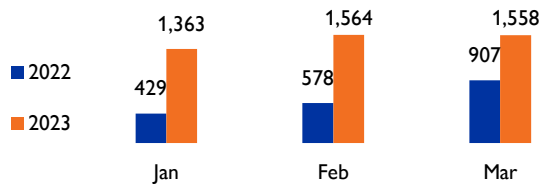
KEY FINDINGS

In total, IOM collected data on 257 migrants outside of official temporary reception centres in BiH. Migrants continue arriving in large numbers in BiH, spend very little time in the country and transit rapidly through the territory to cross the border into the European Union.

DEMOGRAPHIC PROFILES AND LOCALIZATION

Afghan nationals were the most represented nationality, making up almost half (47.2%) of the sample. **There were no longer the most represented nationality among the sample. Moroccan nationals were the second most represented nationality at 19.6 per cent of the total sample.**

NUMBER OF MIGRANTS REGISTERED BY SFA
JANUARY TO MARCH 2023 COMPARED TO 2022



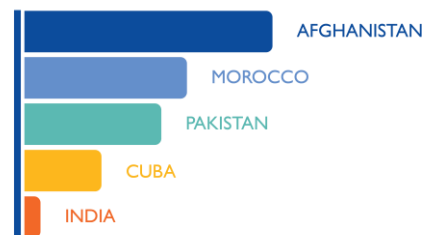
FIGURES AT A GLANCE

- In March 2023, the SFA registered 1,558 new arrivals in Bosnia and Herzegovina.
- In the first three months of 2023, the SFA have registered 4,485 new arrivals in Bosnia and Herzegovina, an increase of 134% compared to the same three months in 2022.

Migrants outside of temporary reception centres used to squat in buildings or camp in parks or rural areas. **However, the tendency now is to stay in private accommodation or in TRCs for a couple of days then move quickly towards the exist points of the country by using taxis and/or buses.** Migrants attempt border crossings very late at night or in the morning before dawn in the border regions in Una-Sana Canton and around Banja Luka.

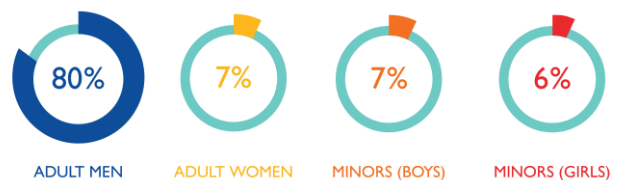
In this round, IOM visited 155 different locations across BiH with a focus on active transit locations, such as bus stops. IOM met and interviewed 215 migrants in this round. The estimate of 257 migrants is established through data triangulation with key informants (see methodology).

TOP 5 NATIONALITIES



Pakistani nationals made up 16 per cent of survey respondents. Nationals of Cuba were the fourth most represented nationality in this round at 9.4 per cent, while nationals of India made up 1.9 per cent of the sample. Nationals of the Islamic Republic of Iran, Iraq, Jordan, Somalia, the Republic of Türkiye, Algeria and Egypt made up the remainder of the sample, each at less than one per cent.

SEX AND AGE DISAGGREGATED DATA



Consistent with trends in previous rounds, **the majority (87.4%) of the sample are adults**, while children made up the remaining 12.6 per cent. **This is a significant increase in the number of children compared to the previous round, when they only made up 3.9 per cent of the sample.** Adult men represented 79.9 per cent of the sample while adult women made up 7.5 per cent.

The children came from Pakistan (44%), Pakistan (37%), Cuba (7.4%), India (3.7%), the Islamic Republic of Iran (3.7%), and Iraq.

1. The SFA, within the Ministry of Security (MoS), is the responsible body for the registration of all foreigners on the territory of BiH, including the issuing of attestations of those expressing the intention to seek asylum. The MoS is also formally responsible for the management of the Immigration Centre and the TRCs.

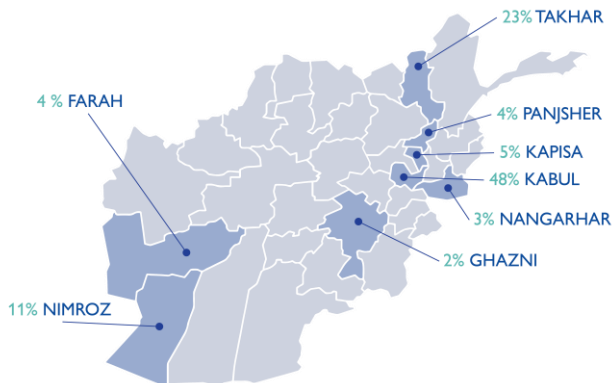
2. No document checks are carried out during the data collection to confirm the statements. Interviewees therefore include asylum seekers and refugees.

3. Data retrieved from the [IOM's Flow Monitoring Portal](#)



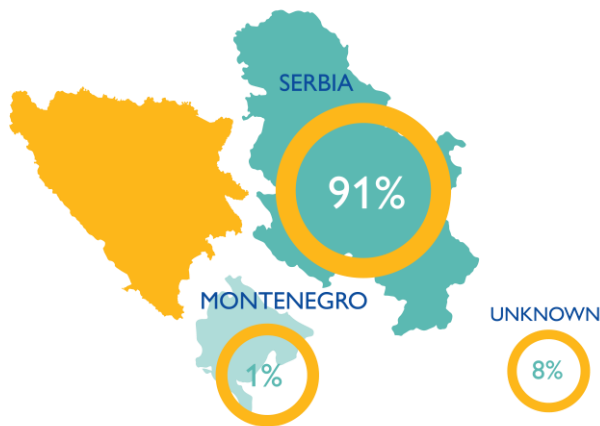
Afghans continue to arrive in large numbers in the Western Balkans. In 2022, they constituted the top nationality of arrivals in the region, making up over one-fourth (28%) of all arrivals. In the first three months of 2023, they are the top nationality of arrivals in BiH with over 2,300 registrations, constituting nearly half (46%) of all arrivals. The main provinces of origin in Afghanistan were Kabul, Takhar, Nimroz, Kapisa, Farah, Panjsher, Nangarhar, and Ghazni.

MAIN AFGHAN PROVINCES OF ORIGIN



Migrants are increasingly entering BiH through Serbia with **almost all respondents (91%) entering BiH from Serbia** in this round, a 22 per cent increase from the previous round. In this round, less than one per cent of respondents said they had entered through Montenegro.

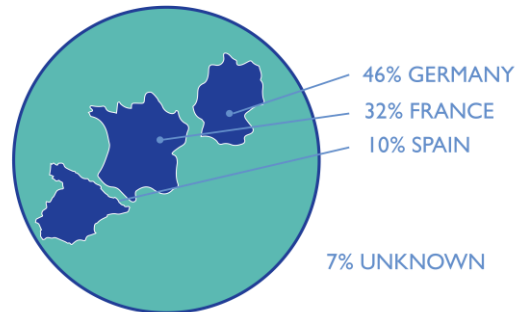
COUNTRY OF ENTRY



INTENDED DESTINATIONS

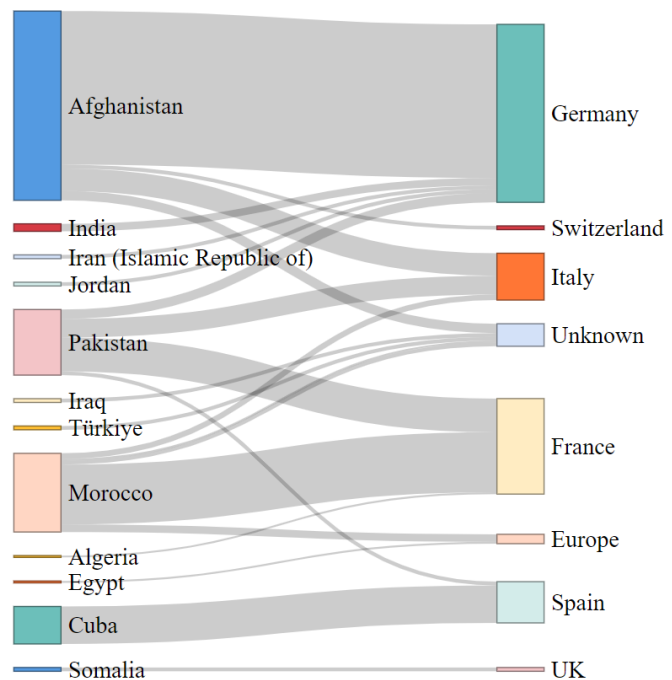
In round 20, almost half (46.3%) of survey respondents said their intended final destination country was **Germany**, while 31.5 per cent stated **France** and ten per cent stated **Spain**. Only 2.7 per cent of respondents stated that **Italy** was their intended country of destination, a significant 19 per cent decrease compared to the previous round. The **United Kingdom** of Great Britain and Northern Ireland and **Switzerland** was reported by 1.3 per cent of survey respondents respectively.

INTENDED DESTINATIONS



Intended destination countries generally vary among different nationalities. As is shown in the chart below, Afghan nationals largely state that Germany is their country of intended destination, while most nationals of Morocco and Pakistan stated France. Cubans overwhelmingly state that they intend to travel to Spain.

INTENDED DESTINATION COUNTRY BY NATIONALITY





12 April 2023

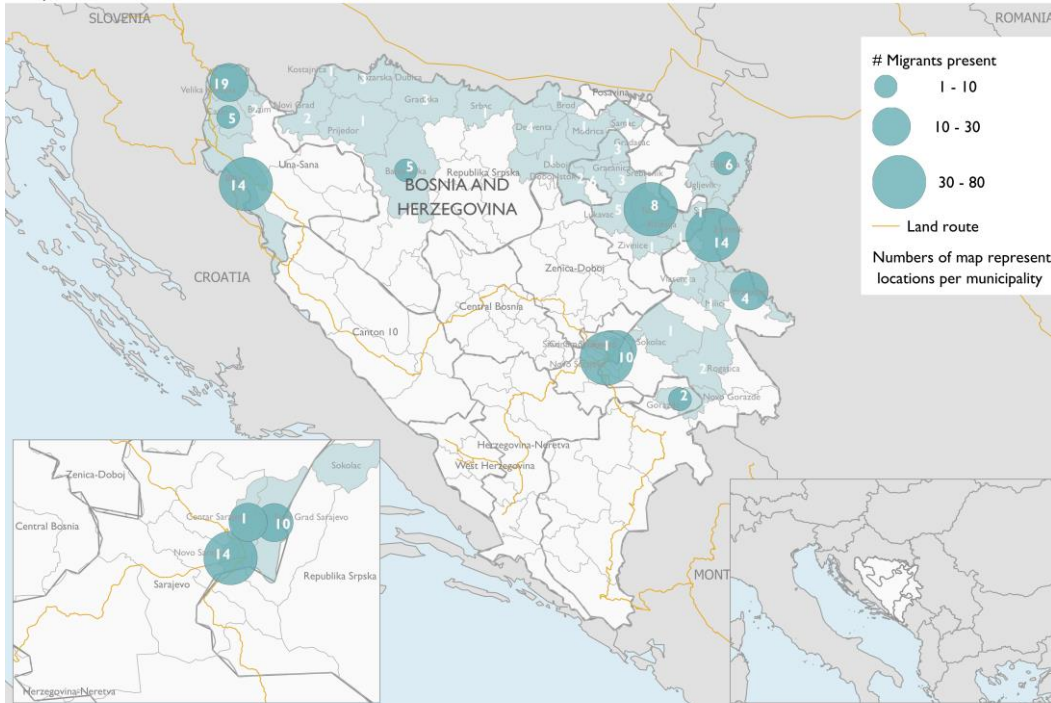
ROUND 20

MIGRANT PRESENCE OUTSIDE RECEPTION

Bosnia and Herzegovina
12 April 2023

Est. **257** MIGRANTS OUTSIDE TRANSIT
RECEPTION CENTERS*

155 Assessed locations in
4 Cantons in FBiH **6** Regions in RS **38** Municipalities



This map is for illustration purposes only. Names and boundaries on this map do not imply official endorsement or acceptance by IOM.

Source Data : IOM, National Authorities

HEALTH ISSUES AND VULNERABILITIES

The questionnaire captures information on specific individual conditions and vulnerable groups among the migrants. These groups include unaccompanied and separated children (UASC) between 15 and 17, UASCs under 15, children under 5, elderly persons over the age of 60, persons with disabilities, pregnant women and women travelling alone. In this round, **there were five UASC children between 15 and 17 years of age, one woman travelling alone, four children under the age of five, and one elderly person over the age of 60.** The most frequently cited medical problems related to scabies and exhaustion.

This data collection exercise also attempts to identify potential medical problems among migrants staying outside TRCs. This is to understand if there are unmet health needs and if people in need of medical attention have indeed received medical assistance in the previous two weeks. This month, there were 10 people with medical problems, seven of whom needed medical attention in the previous two weeks. For five persons, this medical need went unmet.

GEOGRAPHIC DISTRIBUTION

Sarajevo Canton had the highest proportion of migrants interviewed in this round with **38.1 per cent** of the sample surveyed there. This was followed by the **Una-Sana Canton at 21.8 per cent**, an 18.4 per cent decrease from the previous round. Just over one-fifth (20.2%) of the respondents were interviewed in **Republika Srpska**, an 8.5 per cent increase from the previous round. **Tuzla saw a significant increase with 19.1 per cent** of migrants interviewed there, while 0.8 per cent were interviewed in **Bosnian Podrinje**.

REFERRAL INFORMATION

Migrants move rapidly through BiH in an attempt to cross the border into the European Union. Of the survey respondents, 5.8 per cent expressed an interest in remaining in BiH with recognized legal status, residence permit, work permit and the possibility of family reunification.

Over half (53%) of the respondents declared that they were aware of the option of voluntary return and assisted reintegration (AVRR) to their countries of origin.



Picture 1. IOM enumerator speaking with a young girl in Bijeljina in BiH.



METHODOLOGY

The IOM's Displacement Tracking Matrix (DTM) is a system used to capture and monitor displacement and population movements, and to disseminate information regularly and systematically. In BiH, DTM collects data on registrations by nationality at entry points, and data on the number of migrants present in Temporary Reception Centres (TRCs). This data has been collected since 2017 as part of the broader monitoring of mixed migration flows through the Western Balkans and the Mediterranean routes to Europe. Since March 2021, DTM in BiH has also been collecting data on migrants' presence outside reception centres and Flow Monitoring Surveys with migrants in reception.

Design of the data collection – Round 20

Geographical coverage

In round 20, the IOM chose 38 municipalities in four Cantons of the FBiH and in six regions of Republika Srpska entity due to their well-known high presence of migrants. In total, the teams visited 155 unique locations with specific geo-referenced coordinates – known as micro-locations – in 38 different municipalities. In FBiH, the teams visited 40 locations in four municipalities in Una-Sana Canton, 25 locations in three municipalities in Sarajevo Canton, 30 locations in nine municipalities in Tuzla Canton, and two locations in one municipality in Bosnian Podrinje. In RS, the teams visited 58 locations in 21 municipalities (see Map on page 3).

Target population

Foreign nationals travelling in BiH outside TRCs. Migrants accommodated in official TRCs were excluded.

Time frame

Round 20 was carried out on 12 April 2023.

Enumerators

Thirteen teams for a total of 25 enumerators (20 male, 5 female), with language skills in English, Arabic, Dari, Farsi, Turkish and Pashto, together with 11 staff from the Red Cross Society BiH (9 male, 2 female), 11 inspectors from the SFA (7 male, 4 female).

Data collection methods

The questionnaire is available in paper form and as an online/mobile Kobo form in English. The questionnaire consists of five main sections: Total estimated presence of migrants outside TRCs in one location; Sex and age breakdown for the top five nationality groups; Main vulnerabilities and health issues; Main Routes, Transport, Destinations; Interest in referral and further information. Starting in round 5, the IOM added an additional question on the main provinces of origin of migrants from Afghanistan, in light of the displacements triggered by the Taliban takeover of the country.

Starting from Round 13, the IOM introduced a second methodology based on data triangulation. Triangulation refers to triple verification by interviewing at least three key informants residing in the locations visited to obtain more accurate estimates. These key informants can be migrants or local residents and must be independent of each other. The first methodology collected information at the stock level, carrying out group and not individual interviews, thus leading to possible inconsistencies.

This second methodology therefore increases the possibility of estimating the actual population in outside locations, which may not be present at the time of data collection, as some locations are reached at times of the day when migrants are more mobile. In this round, IOM teams interviewed 215 individual migrants, and based on the data triangulation methodology, estimates the presence of 257 migrants outside temporary reception centres.

Limitations

The IOM builds on its pre-established presence in a selected number of municipalities in BiH and on its activities covering the whole country to provide an estimate of the migrant population outside TRCs at a specific point in time. The data collection exercises are conducted in the context of the following limitations:

1. The geographical coverage was limited to a select number of locations in BiH. Since the inception of the project in 2021, thanks to the addition of cantons in FBiH and five regions in the entity of RS, the IOM's geographical coverage has significantly increased. Due to the high mobility of irregular migrants during the summer period, some new locations may not have been visited during the exercise.
2. The SFA's presence during the data collection exercise facilitates access to some locations but may hinder migrants' participation in other locations and/or may cause some bias in migrants' replies to the questions.
3. Data collected using the second methodology is an estimate, which, in combination with the first methodology, will help to obtain a more accurate picture of the number of migrants outside. Having more accurate estimates of the number of people outside TRCs allows IOM, state authorities and humanitarian actors to better provide tailored assistance to those in need.
4. As the exercise attempts to collect data and support migrants outside formal reception facilities, it can be impacted by inclement weather. Cold or wet weather conditions may make it more likely that migrants stay indoors in private facilities or seek temporary accommodation in TRCs.

The IOM is committed to continually and accurately monitoring the locations where migrants usually reside, with the support of other humanitarian organisations. These can change rapidly, in line with the seasons and routes, but also due to other factors (e.g., smuggling and trafficking networks), which have a significant impact on the number of migrants and locations identified through the data collection exercise.