



IOM/SFA
Centre Management
44.8305645, 15.8792137
Site Location

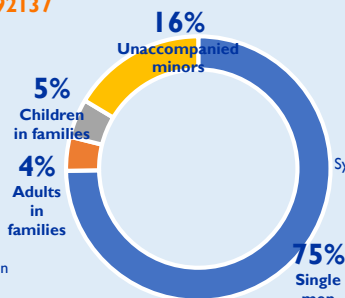
26 OCT 2018
Opening Date

1,515 / 240
beds / # containers
Capacity

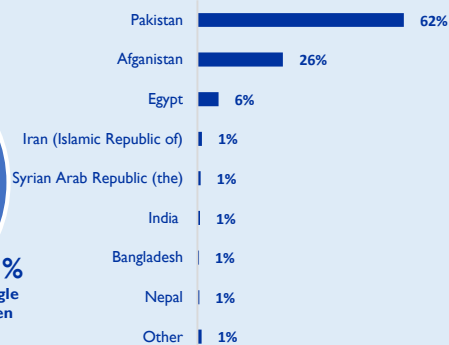
1,907 / 17
beds / pre-registration
Occupancy

10,586 (+353 IN FEBRUARY)
Registered Persons since Opening

Population*



Countries of Origin*



*Source: IOM, 1 March 2020.

~67 DAYS
Average length of stay

Designated for / Temporarily
& vulnerable persons

CCCM (Camp coordination and camp management)

- ✓ A **Migrants Representative Council** meets regularly ensuring the centre's population participation in the overall management.
- ✓ The inter-agency **Community Feedback Committee** reviews received complaints on a weekly basis.
- ✓ The centre's **Info point** is operational 24/7, providing updated information on the available services in the centre and outside.
- ✓ A **meet the manager** mechanism is in place and those interested can sign up and arrange the time at the info point.
- ✓ **Interpreters** for Arabic, Farsi, Pashtu and Urdu provided by **IOM** and **DRC/JRS**.
- ✓ **CCCM meetings** are organized by **IOM** on a weekly basis.
- ✓ **IOM site manager and/or migrant assistants** are present at the site 24/7.

PROTECTION

- ✓ **Free legal aid, counselling and community-based protection** provided by **UNHCR/DRC/Vaša Prava BiH**.
- ✓ 24/7 staff providing information and **referral to protection** by **IOM**.
- ✓ **Psychosocial support** to **GBV** survivors, **empowerment programmes** in the **Centre for Women and girls** and prevention and awareness workshops by **UNFPA/MdM**.
- ✓ **Legal guardians** and a **designated zone** for **UASCs** by **UNICEF/CSW Bihac/SCI**. **Child Protection Officers** present 24/7 for UASCs and children in families by **UNICEF/SCI** and **Psychologist** supported by **UNICEF** through **CSW**.

NFI SHELTER & NFIs

- ✓ **IOM** distributes NFIs daily and provides tailored **NFI** starting-packages.
- ✓ **Wi-Fi** supported by **TSF/IOM**.
- ✓ Distribution of **modern contraceptives** and **hygienic pads** by **UNFPA/MdM**. Complementary provision of NFIs for mothers and babies by **UNICEF/ŽsU** and of school material by **UNICEF**.

FOOD & NUTRITION

- ✓ **Three meals a day + two fruit snacks** prepared and delivered by **IOM/RCSBiH**. An **open kitchen** for individual use is operational.
- ✓ Provision of complementary food to **infants and children below 24 months** by **UNICEF/IOM/RCSBiH**. Provision of **breastfeeding counselling and lactation** and distribution of **Breast Milk Substitute** by **UNICEF/Fenix/DRC**.

HEALTH

- ✓ **Primary health care** and **mental health psychosocial support** by **Public Health Centres** and **DRC/MdM /RCSBiH**. **Referrals** to specialized care and **case-management** by **DRC**.
- ✓ **Pediatric mobile teams** supported by **UNICEF/DRC**.
- ✓ **Medical escort** provided by **DRC/JRS**, **medications** and **medical supplies** by **DRC** and **transportation** by **IOM**.
- ✓ **Sexual and reproductive health services** and **workshops** for women by **UNFPA/MdM**.

WATER, SANITATION & HYGIENE

- ✓ The centre has **119 toilets** and **72 showers**, gender separated.
- ✓ **Laundry system** is in place, and the service is provided to all centers population, supported by **IOM**.
- ✓ **Maintenance and cleaning staff** by **IOM**.
- ✓ **Disinfection, deratization and disinsection** measures take place regularly.

SAFETY & SECURITY

- ✓ **Security staff** present in the centre 24/7. **IOM security assistant** present at site to coordinate, **entry gate** monitored and frequent **checks** undertaken.
- ✓ **Video surveillance system** is operational and provided by **IOM**.
- ✓ **Increased safety** of personnel and centres population by placing fire extinguishers, first aid kits, smoke detectors and evacuation exits by **IOM**.

EDUCATION & LEISURE

- ✓ **Primary school enrolment** for all children aged 6 -15 and pre-enrolment medical examination done by **UNICEF/DRC**. **IOM** provides **transportation**.
- ✓ **Educational and recreational activities** for children and UASC by **UNICEF/SCI**.
- ✓ Several **social integration corners** by **IOM/Žene sa Une**.
- ✓ English lessons and literacy courses by **UNFPA/MdM**.

PREPARED BY: **IOM**
UN MIGRATION

ON BEHALF OF: the Inter-Agency response in BiH

CONTACTS: Amira Hadžimehedović **CCCM MANAGER** ahadzimehed@iom.int
Edita Selimbegović **PUBLIC INFORMATION** eselimbegovic@iom.int
Amira Al Makzomy **INFO MANAGEMENT** aalmakzomy@iom.int

For more info www.bih.iom.int

THIS CENTRE IS SUPPORTED BY THE EU



Bira TRC © IOM 2020



IOM/Služba za poslove sa strancima BiH (SPS)

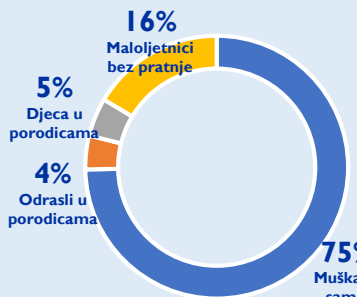
Upravljanje centrom
44.8305645, 15.8792137
Lokacija
26. OKTOBAR 2018
Datum otvaranja

1,515 / 240
kreveta / # kontejnera
Kapacitet

1,907 / 17
kreveta / # predregistracijska
Popunjenost

10,586 (+353 U FEBRUARU)
Registrovanih osoba od otvaranja

Populacija*



Zemlje porijekla*

Pakistan	62%
Afganistan	26%
Egipat	6%
Iran (Islamska Republika)	1%
Sirijska Arapska Republika	1%
Indija	1%
Bangladeš	1%
Nepal	1%
Druge	1%

*Izvor: IOM, 01 March 2020.

~ 67 DANA
Prosječno trajanje boravka

Namijenjeno za / Privremeno

CCCM (Koordinacija i upravljanje kampom)

- ✓ **Vijeće migranata** se sastaje redovno kako bi se osiguralo učešće migrantske populacije u upravljanju centrom.
- ✓ **Međuagencijski odbor** u centru razmatra i daje odgovor na zaprimljene žalbe na sedmičnom nivou.
- ✓ **Info centar** je u funkciji 24/7 i pruža ažurirane informacije o servisima unutar i van centra.
- ✓ Postoji **mehanizam za upoznavanje menadžera** i oni koji su zainteresovani mogu se prijaviti i dogovoriti vrijeme u info centru.
- ✓ **Prevodioce** za arapski, farski, paštu i urdu obezbjeđuju **IOM** i **DRC/JRS**.
- ✓ **IOM** organizuje **CCCM** sastanke na sedmičnoj bazi. **IOM** upravitelj centra i/ili migrant asistenti su prisutni u centru 24/7.

NFI SMJEŠTAJ I NEPREHRAMBENI ARTIKLI

- ✓ **IOM** vrši podjelu **NFI** (neprehrambenih) paketa koji uključuju higijenske potrepštine i posteljinu svim novopristiglim licima.
- ✓ **Wi-Fi** konekciju je obezbijedio **TSF/IOM**.
- ✓ Podjelu **modernih kontracepcijskih sredstava** i **higijenskih uložaka** vrši **UNFPA/MdM**.
- ✓ Komplementarno pružanje **NFI** za **majke i bebe** obezbjeđuje **UNICEF/Žene sa Une** a **školski pribor** obezbjeđuje **UNICEF**.

ZDRAVSTVO

- ✓ **Primarnu medicinsku pomoć** i **psihosocijalnu podršku** mentalnom zdravlju pružaju **Javne zdravstvene ustanove** na licu mjesta, a **upućivanje** na specijalističku njegu vrši **DRC**.
- ✓ **Pedijatrijski mobilni tim** podržavaju **UNICEF/DRC**.
- ✓ **Medicinsku pratnju** obezbjeđuju **DRC/JRS**, lijekove i medicinsku opremu **DRC**, a transport **IOM**.
- ✓ **Usluge seksualnog i reproduktivnog zdravlja** i radionice za žene obezbjeđuje **UNFPA/MdM**.

SIGURNOST

- ✓ **Zaštitarska agencija** je prisutna 24/7. **IOM** pomoćnik za **sigurnost** koordinira i vrši monitoring u centru.
- ✓ **Ulazna kapija** se kontroliše i provjere **popunjenosti** se vrše učestalo.
- ✓ **Sistem videonadzora** je u funkciji i obezbjeđuje ga **IOM**.
- ✓ **Povećana sigurnost osoblja** i **korisnika** postavljanjem aparata za gašenje požara, opreme za prvu pomoć, detektore dima i evakuacijske izlaze od **IOM-a**.

ZAŠTITA

- ✓ **Besplatnu pravnu pomoć, savjetovanje i zaštita** utemeljena u zajednici, koju pružaju **UNHCR/DRC/Vaša Prava BiH**.
- ✓ 24/7 osoblje koje pruža informacije i **upućivanje na zaštitu pruža IOM**.
- ✓ Psihosocijalnu podršku za preživjele **rodno-zasnovanog nasilja, kao i programe osnaživanja** i radionice za prevenciju i podizanje svijesti u **Centru za žene i djevojke** pruža **UNFPA/MdM**.
- ✓ Službenici za zaštitu djece su prisutni 24/7 za maloljetnike bez pratnje i za djecu u porodicama (**UNICEF/SCI**), kao i **psiholog** od strane **UNICEF** preko **Centar za socijalni rad Bihać**.
- ✓ **Zakonske staratelje** i **odvojeni prostor** za maloljetnike bez pratnje obezbjeđuju **UNICEF/Centar za socijalni rad Bihać/SCI**.

HRANA I ISHRANA

- ✓ **Tri obroka dnevno** + dva voćna obroka se pripremaju i distribuišu od strane **IOM/DCKBiH**.
- ✓ **Zajednička kuhinja** je u funkciji.
- ✓ **UNICEF/IOM/DCKBiH** vrši nabavku dodatne hrane za djecu mlađu od 24 mjeseca. **Savjetovanje o dojenju** i nabavka zamjenskog mlijeka za dojenčad od strane **UNICEF-a/Fenix/DRC**.

VODOSANITARIJE I HIGIJENA

- ✓ U centru se nalaze **119 toaleta** i **72 tuša**, odvojenih po spolovima.
- ✓ **Servis za pranje rublja** u centru je osiguran za sve korisnike, od strane **IOM-a**
- ✓ **Održavanje** i **čišćenje** vrši **IOM** osoblje.
- ✓ **Dezinfekcija, deratizacija** i **dezinsekcija** se vrše redovno.

OBRAZOVANJE I SLOBODNO VRIJEME

- ✓ **Polazak u osnovnu školu** za svu djecu uzrasta 6-15 je omogućio **UNICEF**. Pripremu za polazak u školu i sistematski pregled obezbjeđuju **UNICEF/DRC**. **IOM** obezbjeđuje **prevoz**. **Edukativne** i **rekreacijske aktivnosti** za djecu i maloljetnike bez pratnje organizuje **UNICEF/SCI**.
- ✓ **Nekoliko Integracijskih kutaka** obezbjeđuju **IOM/Žene sa Une**. **Časove engleskog** i **časove opismenjanja** obezbjeđuju **UNFPA/MdM**.



PRIPREMIO:
IOM
UN MIGRATION
Za više informacija www.bih.iom.int

U IME:
međuagencijskog
odgovora u BiH

KONTAKTI:
Amira Hadžimehmedović **CCCM UPRAVITELJ CENTRA** ahadzimehmed@iom.int
Edita Selimbegović **JAVNO INFORMISANJE** eselimbegovic@iom.int
Amira Al Makzomy **UPRAVLJANJE INFORMACIJAMA** aalmakzomy@iom.int

